



FREE WESLEYAN CHURCH OF TONGA

TEKINA I MOANA PROJECT

Abstract

*'God, please forgive us because of our sins and save our family from this tidal wave
and this volcanic disaster In Jesus name Amen'.
(Part of a prayer from a young boy in a van that surprised his mum while they rushed
for their lives) From 'Ahau village*

BRIEF REPORT

STRATEGIC ACTION 2022 – 2023

February 2022

***Submitted by the Coordinator of Tekina I Moana;
Rev. Makoni Pulu***

**Free Wesleyan Church of Tonga (FWCT); Tekina I Moana
Emergency Respond report of the victims of the Volcanic Eruption in Tonga
on Saturday 15th January 2022.**

The tear drops of the volcano



'.. I turned around to find a helpless unknown boy, about 3 years old trembling in tears and fears. I lifted him in a second and my heart was desperate louder than his voice. We rushed to the hill in no time (from Atataa Island)

'..I heard my dad yelled, don't stop running, and don't look back at the waves, focus on the hill..I have to help the elderly' (cried from Kotu Island)

'The tidal waves were larger than the houses and the coconut trees...and the big island (Nomuiki) next to us I thought this will be the last day of my life.' (from Nomuka Island)

'..I found my mom still holding to a huge tree before darkness ...Unfortunately I found my dad lying close to the beach on Sunday morning. He did not make it (tears from Mango Island).'

'.. after the 1st explosion we knew what is coming next, everyone rushed to the mountain; after the 2nd explosion the whole population is on the mountain. We

started singing hymns and songs and we prayed as the night fall. we have no time to worry and listen to the destruction of the whole island by the tidal waves. That peace was in our minds and soul, when we came down in the morning to find nothing left for us to live on.' (from Fonoi Island). '..... I name the mountain Mt. Zion, because God is our mountain and refugee and it was our only hope for the Mango Island people (62). We buried the Steward of the Church on this mountain.' (100% destruction) (the whole island is resettling in Tongatapu). '..I lost everything..except my life..praise the Lord' (from Tungua Island) '...after the first wave both houses and everything were gone... I ordered my grandson (16) to leave me behind because I am 86.. He cried .. but refuse to put me down.. and kept running.. and I could hear my grandson praying louder to God ..please save us... the second wave came and destroyed a house close to us and change its direction ..then a truck stopped and save us...' (from Nomuka Island)

(Note: We have hundreds of shock experienced stories and we treasured them in our hearts)

About 5:45pm on Saturday the 15th of January 2022, was a darkest day to be remembered in the history of Tonga. The explosion of the volcanic in *Hunga Tonga* and *Hunga Ha'apai* transformed everything in the life of the Tongans. The massive



blast was heard from Israel, USA, Japan, South America, Australia, New Zealand and Pacific islands, and many more. The Multitude of tidal waves that created was experienced from different nations in the world. It uprooted all that is standing in its way. Including, houses, trees, cars, water tank, road, boats,

churches, schools, farms, people and families. It mighty cannot be measured by money or any other scale, but by how many Tongan lives that was saved. The Volcano



breath a wind of dust and sand that covered our land (*fonua*) and Ocean (*moana*) and destroyed about 70% of our livelihood. It ruined all our drinking water and hospitalized thousands of our asthma patients. Fortunately, the tidal waves that was created only claimed

3 lives in Tonga. This volcanic explosion will never be forgotten in the minds and souls of the Tongan, especially the elderly and young generation. The whole nation is covered with dust, sadness, and tear drops of the volcano.

Some of the issues: *immediate response survey by FWCT reach-out program (Tekina I Moana).*

- Significant percentages of Tonga are severely affected by this natural disaster (*Tongatapu, 'Eua and Ha'apai*)
- A huge percentage of extensive physical destruction of homes, churches, property and possessions. This result in total evacuation and resettlement of many islands to Tongatapu. That is the whole island of Mango, Tungua and 'Atataa. And massive number of displaced people and animals.
- A large percentage of church buildings, school buildings, island's hospital, and public utilities were destroyed and damaged. This will affect the spiritual, mental and physical wellbeing of the people.
- Destruction of big and small wharves, roads, communication, internet, cables, airports, cars, trucks, big and small boats and many other means of communication, was a huge interruption for local and international link for Tonga and its neighbors. It is now a chaos and a breakdown of communication.
- Findings from the *Tekina 'I Moana* reach out was so different from the immediate report that



we received after the disaster. This will lead to the victims and stakeholders confused as of the misinformation.

- Many businesses (*farming*), fishing industries, employment will suffer a severe loss. Because individual people will suffer a huge financial loss. And must be a convergence of thousands of Tongans desperate for assistance for survival.
- The shellfish, living things and fish around the shallow reefs are poisonous by the volcanic eruption, this is a warning by the Ministry of Fisheries. Most of the Tsunami victims and the people of Tonga depend on this source of food. The vital source food is banned for 2 months.
- There is a lack of coordination between religious bodies, Government agencies in Disaster Recovery, Non-Government Organization, communities' groups and strategic partners
- There is a lack of psychosocial support and consolidating spiritual Accompaniment. Traumatized People need mental wellbeing, personal support and a critical stress management.
- Covid-19 is in Tonga now, and the lock down is an enormous issue to the recovery process
- Mango Is and 'Atataa Is are resettled in Tongatapu as there is nothing left for them in the Islands



What does the church do?

The ultimate sweet dream (vision) of the Free Wesleyan Church of Tonga (*FWCT*) is committed to be the best organisation for spiritual, mental and physical services to experience life in fullness. Through worship, education and physical needs with guiding of the power of the Holy Spirit.

The mission of the Church defines the work of the church:¹

- *To respond to the call of Jesus in faith amid the rapid changes of this 21st Century.*



¹ This is referring to the Vision and Mission of the FWCT in the FWCT website.

- To strengthen and transform the church's ministry, worship and services to better sustain all members.
- To express faith, worship, prayer, teaching and ministry in ways designed to effectively meet the different needs of diverse groups of people.
- To be an inclusive church where all people, regardless of age, gender or status, are valued members of the Body of Christ.
- To be relevant and connected to the wider community - local and international
- To plan for future growth by fully organising the FWCT, its programmes and its church-life around the purposes of God.



The FWCT created the Disaster management recovery arm, in related to the Vision and the Mission, to look after the well-being of the member church. Therefore, 'Tekina I Moana' project was born in 2018, to cater for destruction of 'Cyclone Kita'. This year, Tekina I Moana immediately rush in to respond to the severely devastation of the volcanic disaster in the last few days.



'Tekina- 'I- Moana' (floating in the vast Ocean)

Vision: Capitalize on Well-being of Natural Disaster Victims

Action: Respond, Reconnect and Rebuild through Transformative Outcomes

The theological basis for our concern on this natural crisis is God's relationship to His created world – *fanua* (land) and *moana* (sea). The Creation story emphasizes that God is our creator and we are His creation. The Jubilee Year in the Old Testament was God's attempt to continually strive for a new beginning. The shared stories and experiences about the volcanic eruption, tidal waves, climate change and sea level rise and their impacts, we witness and heard from our communities, were very sad, emotion, but hopeful on one hand.

However, Psalm 23 remind us; that the LORD is our shepherd; we shall not be in want. He makes me lie down in green pastures, he leads me beside quiet

waters, he restores my soul. He guides me in paths of righteousness for his name's sake. Even though I walk through the valley of the shadow of death, I will fear no evil, for you are with me; your rod and your staff, they comfort me. You prepare a table before me in the presence of my enemies. You anoint my head with oil; my cup overflows. Surely goodness and love will follow me all the days of my life, and I will dwell in the house of the LORD forever. God is with us.

- *Tekina I Moana* is a five (5) years old project of Free Wesleyan Church of Tonga (FWCT). Its major strength is the experience in navigating our canoe during the Natural Disaster. It has the biggest network, largest members, and biggest number of workers in Tonga.
- *Tekina I Moana* (FWCT) is the largest active network in Tonga in collaboration with member churches, Strategic partners and grassroots communities, civil society, government and, where appropriate, for financial assistance scheme to finance, the cost of response, reconnect, and rebuilt. These existing networks are already in place and reactivated.



- Strong Tongan family ties, strong cultural ties, powerful Christian values, are the advantages of this *Tekina I Moana* system. This was revealed by the immediate huge local contribution response by the church, families and friends to the recovery.



Where is our home?
Fonoifua Is.



Nomuka Is.



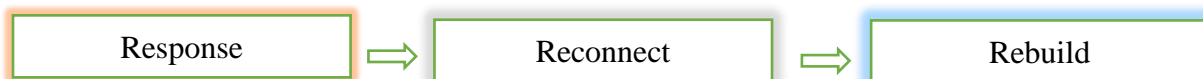
Ha'afeva Is.



Where is our home?
Nomuka Is

Tekina I Moana (TIM) Framework:

The Response, Reconnect, and Rebuild Through Transformative Outcomes Framework



1. RESPONSE:

The immediate response when people are threatened. Homes and lives are in danger. After the volcanic eruption and the tsunami

Date	Immediate Action	Explanation	Recommendation
20/1	Reached out to the village of Kanokupolu, Tongatapu 71 families. Provide bag of foods and drink for each family. Immediate survey was conducted. Western side of Tongatapu.	Ministers (Faifekau) listened to their stories. Shared the word of God with prayer. A counselling and encouragement were also part of talanoa. Total destruction by the Tsunami. Bibles were also given to the families.	1. A immediate clean up to the whole village 2. Youth of the western district were asked to helped 3. Counselling for the traumatized, stress management, and spiritual encouragement and other youth program 4. Accommodation for families 5. Two babies need urgent support 6. Consistent support by the ministers (faifekau) 7. Need Diapers for elderly people 8. Tongatapu superintendent Rev. Tevita Ofahulu requested NEMO to provide deep freezer, stove, and other cooking utensils for Mango Island at Longolongo Hall 9. To be careful with drugs trafficking during this time in Patangata area. 10. Mango & 'Atataa need special care and counselling because of their relocation and leaving their Islands behind. 11. Follow- up of work that has been done.
21/1	Same visitation was done to 'Ahau Village next to Kanokupolu. 21 families. Same bag of foods and survey	Same program.	
22/1	Follow up visit to Kanokupolu, 'Ahau.	This time with clothes and other sanitation materials and so on.	
	Visited the relocation people of Mango Island in Longolongo Hall and from 'Atataa Island in Kolomotu'a hall. Food and clothes were provided by the government and the churches.	TIM provided talanoa sharing session, encouragements, and prayers.	
23/1	Visited Patangata Village. Same services were provided such counselling. (9 families).	TIM provided counselling as the priority needs of families who lost their house.	



At Taufa'ahau wharf



MV Maui to Ha'apai

***Tekina I Moana* (TIM)** Reached out to Ha'apai Islands. TIM hired MV Maui to visit the victims of the disaster in Ha'apai. Rev. Dr. Tevita Koloa'ia Havea the president of the church, 52 ministers, the two head stewards of Tongatapu, and twenty youth were *Tekina I Moana* team travelled to the Island of Ha'apai.

RESPONSE: *Fakavavevave*_(within 2 weeks)

Date	Immediate Action	Explanation	Recommendations
25/1 Nomuka& Filipai	Distribution of food, water, Clothes and other emergency gear.	Visitation, Talanoa, counselling, prayer and quick survey	Follow-up was done by the member churches of Vava'u
Fonoifua	Distribution of food, Clothes and other emergency gear.	Visitation, Talanoa, counselling, prayer and quick survey	Follow-up was done by the member churches of Vava'u
Ha'afeva	Distribution of food, water, Clothes and other emergency gear.	Visitation, Talanoa, counselling, prayer and quick survey	Follow-up was done by the member churches of Vava'u
Pangai	Distribution of food, water, Clothes and other emergency gear.	Talanoa and Kava Session. Resting ready to continue the next day	Follow-up was done by the member churches of Vava'u
26/1 Matuku	Distribution of food, water, Clothes and other emergency gear.	Visitation, Talanoa, counselling, prayer and quick survey	Follow-up was done by the member churches of Vava'u
Kotu	Distribution of food, water, Clothes and other emergency gear.	Visitation, Talanoa, counselling, prayer and quick survey	Follow-up was done by the member churches of Vava'u
Tungua	Distribution of food, water, Clothes and other emergency gear.	Visitation, Talanoa, counselling, prayer and quick survey	Follow-up was done by the member churches of Vava'u

The cost of the food ration, clothes and travelled was mostly contributed in kind by the member churches of the Free Wesleyan Church of Tonga and *Tekina I Moana*, which about \$90,000



2. RECONNECT: Fakaakeake (Within 2 months)

Almost 90% of all the small boats of the islands were fully destroyed. Communication and their livelihood were depending on these engine boats. This is an urgent need for the survival of the islanders. The following actions need to do within 2 months.

Date	Strategic Action	Explanation	Recommendations
Nomuka& Filipai	20 tents 10 temporary mobile toilets 20 beds, 50 blankets etc 50 school bags with complete sets of materials 6 small engine boats Chainsaws, knife and tools 10 Generators 10 drums of petrol Fishing gears, nets, etc Replanting root crops and vegetables etc. Water tanks etc	Seek assistance for contribution from FWCT member churches and its Strategic Partners	This is critical for safety and survival of the Island within 2 months. Lockdown due to Covid is a huge challenge
Fonoifua	20 tents 10 temporary mobile toilets 20 beds, 20 blankets etc 30 school bags with complete sets of materials 6 small engine boats Chainsaws, knife and tools Generators 10 drums of petrol Fishing gears, nets, etc Replanting root crops and vegetables etc. Water tanks etc	Seek assistance for contribution from FWCT member churches and its Strategic Partners	This is critical for safety and survival of the Island within 2 months. Lockdown due to Covid is a huge challenge
Ha'afeva	20 tents 10 temporary mobile toilets 20 beds, 30 blankets etc 40 school bags with complete sets of materials 6 small engine boats Chainsaws, knife and tools Generators 10 drums of petrol Fishing gears, nets, etc Replanting root crops and vegetables etc. Water tanks etc	Seek assistance for contribution from FWCT member churches and its Strategic Partners	This is critical for safety and survival of the Island within 2 months. Lockdown due to Covid is a huge challenge
Matuku	20 tents 10 temporary mobile toilets 20 beds, 50 blankets etc 50 school bags with complete sets of materials 6 small engine boats Chainsaws, knife and tools Generators 10 drums of petrol Fishing gears, nets, etc Replanting root crops and vegetables etc. Water tanks	Seek assistance for contribution from FWCT member churches and its Strategic Partners	This is critical for safety and survival of the Island within 2 months. Lockdown due to Covid is a huge challenge
Kotu	10 tents 10 temporary mobile toilets 20 beds, 50 blankets etc	Seek assistance for contribution from FWCT member	This is critical for safety and survival of the Island within 2 months.

	50 school bags with complete sets of materials 6 small engine boats Chainsaws, knife and tools 10 Generators 10 drums of petrol Fishing gears, nets, etc Replanting root crops and vegetables etc Water tanks etc	churches and its Strategic Partners	Lockdown due to Covid is a huge challenge
Tungua	20 tents 10 temporary mobile toilets 20 beds, 50 blankets etc 50 school bags with complete sets of materials 6 small engine boats Chainsaws, knife and tools 10 Generators 10 drums of petrol Fishing gears, nets, etc Replanting root crops and vegetables etc Water tanks etc	Seek assistance for contribution from FWCT member churches and its Strategic Partners	This is critical for safety and survival of the Island within 2 months. Lockdown due to Covid-19 is a huge challenge
Mango	10 tents 10 temporary mobile toilets 10 beds, 50 blankets etc 25 school bags with complete sets of materials 6 small engine boats Chainsaws, knife and tools 5 Generators 10 drums of petrol Fishing gears, nets, etc Replanting root crops and vegetables etc. Water tanks etc	Seek assistance for contribution from FWCT member churches and its Strategic Partners	This is critical for safety and survival of the Island within 2 months. Lockdown due to Covid is a huge challenge
'Atataa	20 tents 10 temporary mobile toilets 20 beds, 50 blankets etc 50 school bags with complete sets of materials 6 small engine boats Chainsaws, knife and tools 10 Generators 10 drums of petrol Fishing gears, nets, etc Replanting root crops and vegetables etc Water tanks etc	Seek assistance for contribution from FWCT member churches and its Strategic Partners	This is critical for safety and survival of the Island within 2 months. Lockdown due to Covid is a huge challenge

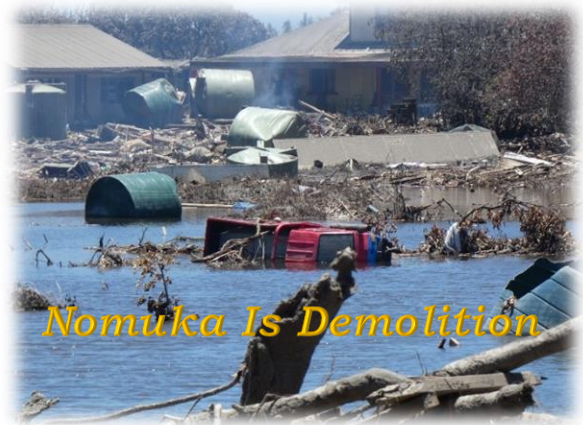
Estimated Cost of reconnected strategic actions is about T\$200,000

3. REBUILD: Fakafo'ou (within 6-18 months)

Rebuilding of homes, churches, schools are the main component of this phase.

Date	Strategic Actions	Explanation	Recommendations
Nomuka & Filipai	Rebuild residence of the church minister in Nomuka and Filipai Rebuild Hall and Classrooms for Tupouto'a College Fixed Church Building Rebuild elderly and widows houses in the churches (<i>if funds available</i>)	We need a lot of assistance here. It cost a lot of money	Seek help of friends and strategic partners
Fonoifua	Rebuild residence of the church minister Fixed Church Building Rebuild elderly and widows houses in the churches (<i>if funds available</i>)	We need a lot of assistance here. It cost a lot of money	Seek help of friends and strategic partners
Ha'afeva Is	If funds allowed, we will rebuild some of the members houses		Seek help of friends and strategic partners
Matuku Is	Fixing job to the church property		Seek help of friends and strategic partners
Kotu Is	Fixing job to the church property		Seek help of strategic partners
Tungua Is	Rebuild residence of the church minister Fixed Church Building Rebuild elderly and widows houses in the churches (<i>if funds available</i>)	We need a lot of assistance here. It cost a lot of money	Seek help of friends and strategic partners
Mango Is	Rebuild residence of the church minister Rebuild Church Building Rebuild elderly and widows houses in the churches (<i>if funds available</i>)	We need a lot of assistance here. It cost a lot of money	Seek help of friends and strategic partners
'Atataa	Rebuild residence of the church minister Rebuild Church Building Rebuild elderly and widows houses in the churches (<i>if funds available</i>)	We need a lot of assistance here. It cost a lot of money	Seek help of friends and strategic partners

Estimated Cost of Rebuilding Strategic Action T\$850,000



Nomuka Is Demolition



Malo 'aupito



Tungua Is



Hopeful spirit



Ha'afeva Is

Note: we have hundreds of photos but we only provide this sample for your information



Summary Budget

Phase 1 Response Strategic Action

DATE	ACTIVITIES	COST ITEMS	TOTAL
January 2022	Immediate Response to Tongatapu Kanokupolu, 'Ahau, Ha'atafu, and 'Atataa Islands	Travel Bible, Food Ration, Clothes, water, Petrol, warm cooking meals, cooking utensils etc	
Response Phase 1	Immediate response Nomuka Is, Fonoifua Is, Kotu Is, Matuku Is, Mango Is, Ha'afeva Is and Ha'apai Is	Travel Bible, Food Ration, Clothes, water, Petrol, warm cooking meals, cooking utensils etc	
		Total costs	\$95,000
	<i>The cost of the response phase 1 was contributed by the FWCT member churches and the Tekina-I-Moana project</i>		

Phase 2 Reconnect Strategic Action

DATE	ACTIVITIES	COST ITEMS	TOTAL
January 2022	Reconnect strategic action to Tongatapu Kanokupolu, 'Ahau, Ha'atafu, and 'Atataa Islands	Refer to the Reconnect Strategic action in the framework	
Response Phase 1	Reconnect action to Nomuka Is, Fonoifua Is, Kotu Is, Matuku Is, Mango Is, Ha'afeva Is and Ha'apai group		
		Total costs	T\$200,000
	<i>The cost of the Reconnect phase 2 will be covered by Tekina-I-Moana project with the support of the local and international strategic partners</i>		

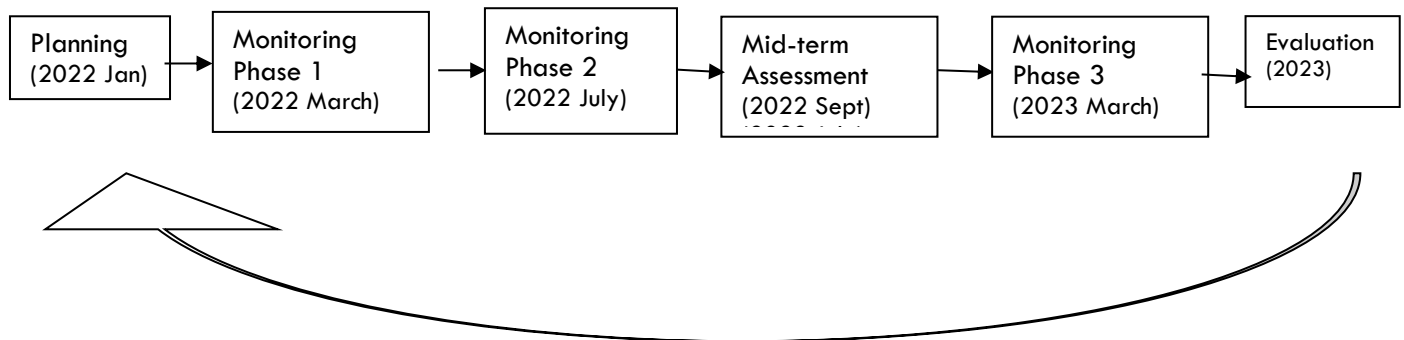
Phase 3 Rebuild Strategic Action

DATE	ACTIVITIES	COST ITEMS	TOTAL
January 2022	Rebuild action of Kanokupolu, 'Ahau, Ha'atafu, and 'Atataa Islands	Refer to Rebuild strategic action in the Framework	
Response Phase 1	Rebuild action Nomuka Is, Fonoifua Is, Kotu Is, Matuku Is, Mango Is, Ha'afeva Is and Ha'apai Group		
		Total costs	\$850,000
	<i>The cost of the Rebuild phase 3 will be covered by Tekina-I-Moana project with the support of the local and international strategic partners</i>		

MONITORING / EVALUATION

The *Tekina I Moana* project will be monitor according to the expected outcomes or results under each of the strategic activities. The Monitoring Evaluating Team will assess and report the resources used to the interested stakeholders both financial and non-financial report whenever is due. The evaluation results from the 3 RRR framework will compiled a report and submitted to the partners in these activities. It is envisaged that the report on the activities will be submitted in the end of the project. *Tekina I Moana* has financial procedures and system to monitor and evaluate the project.

Moreover, sustainability of *Tekina I Moana* (TIM) project or, for that matter, the credibility of the organisation depends on its ability to learn from the disaster experience of its work. In this regard, TIM is committed to implementing a Planning, Monitoring and Evaluation (PME) framework in conjunction with the implementation of the Strategic Actions 2022 – 2023. The following diagram illustrates the six components of the PME framework and how it will be implemented.



CONCLUSION

The *Tekina-I-Moana* Strategic Action 2022 – 2023, we hope, gives our partners, and member Churches and other stakeholders the clarity of where we are to go in the next 24 months. The contents are by no means set in stone. It will be reviewed during the mid-term assessment. The outcomes of the mid-term review will help us to be effective in the 2nd and the 3rd implementation phase.

The successful implementation of the plan will need the confidence of the member Churches and other stakeholders, and our partners to deliver on the outcomes. In the members of the *Tekina I Moana* monitoring committee and networks and staff, we believe that we have the capacity, the expertise, the experience, the knowledge and skills to successfully implement this plan. We ask only for your support and confidence in us and our abilities to implement it, for the benefit of the volcanic disaster and tsunami victims.